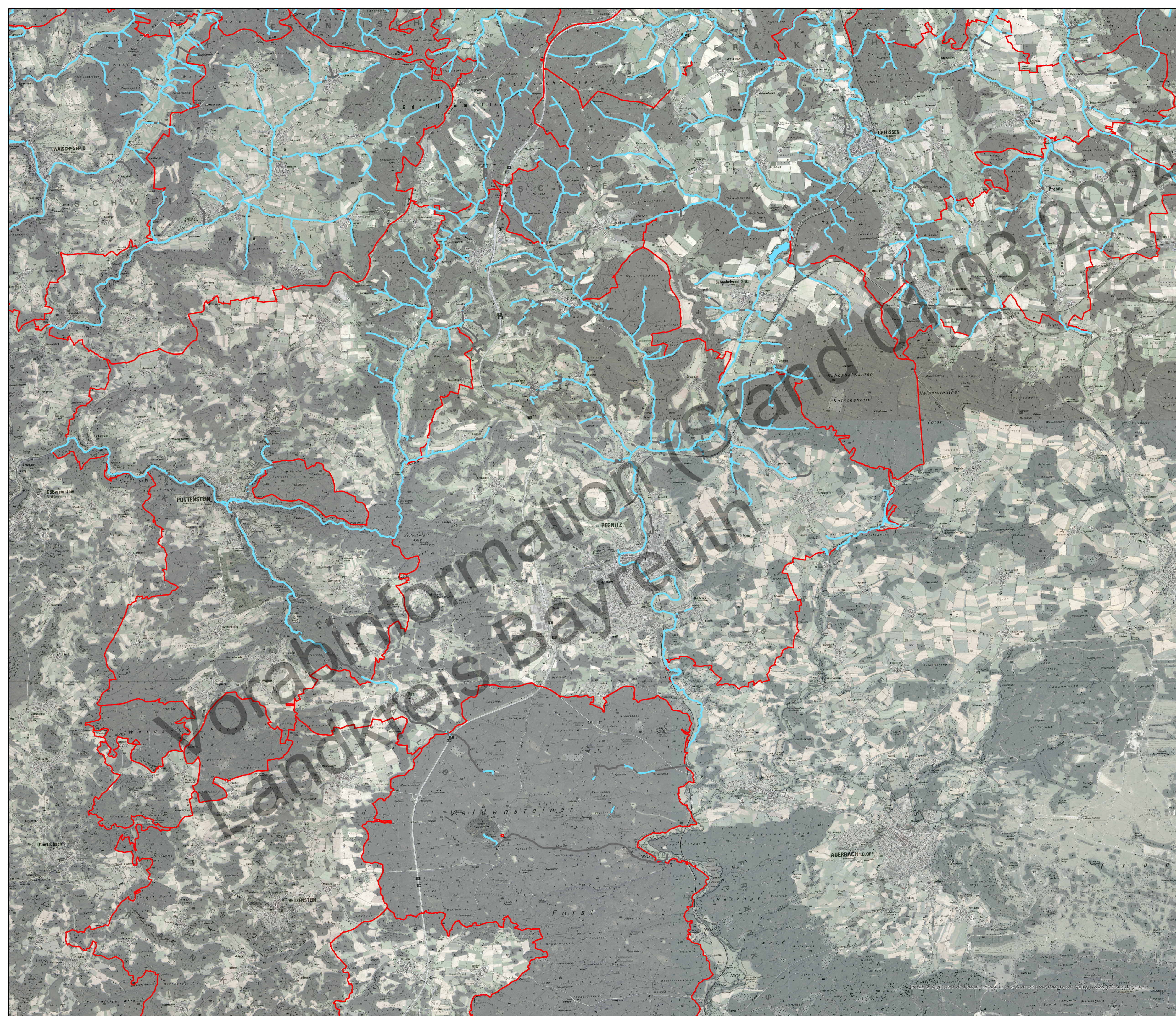





Vorläufige Einstufung der  
Gewässerrandstreifen-Kulisse der  
Gemeinde:  
Pegnitz  
(Stand: 01.03.2024)



### Legende

-  Gewässerrandstreifen erforderlich
-  unterirdischer Verlauf
-  Gemeindegrenze



Maßstab: 1:42.000

0 0,5 1 2 3 4  
Kilometer

