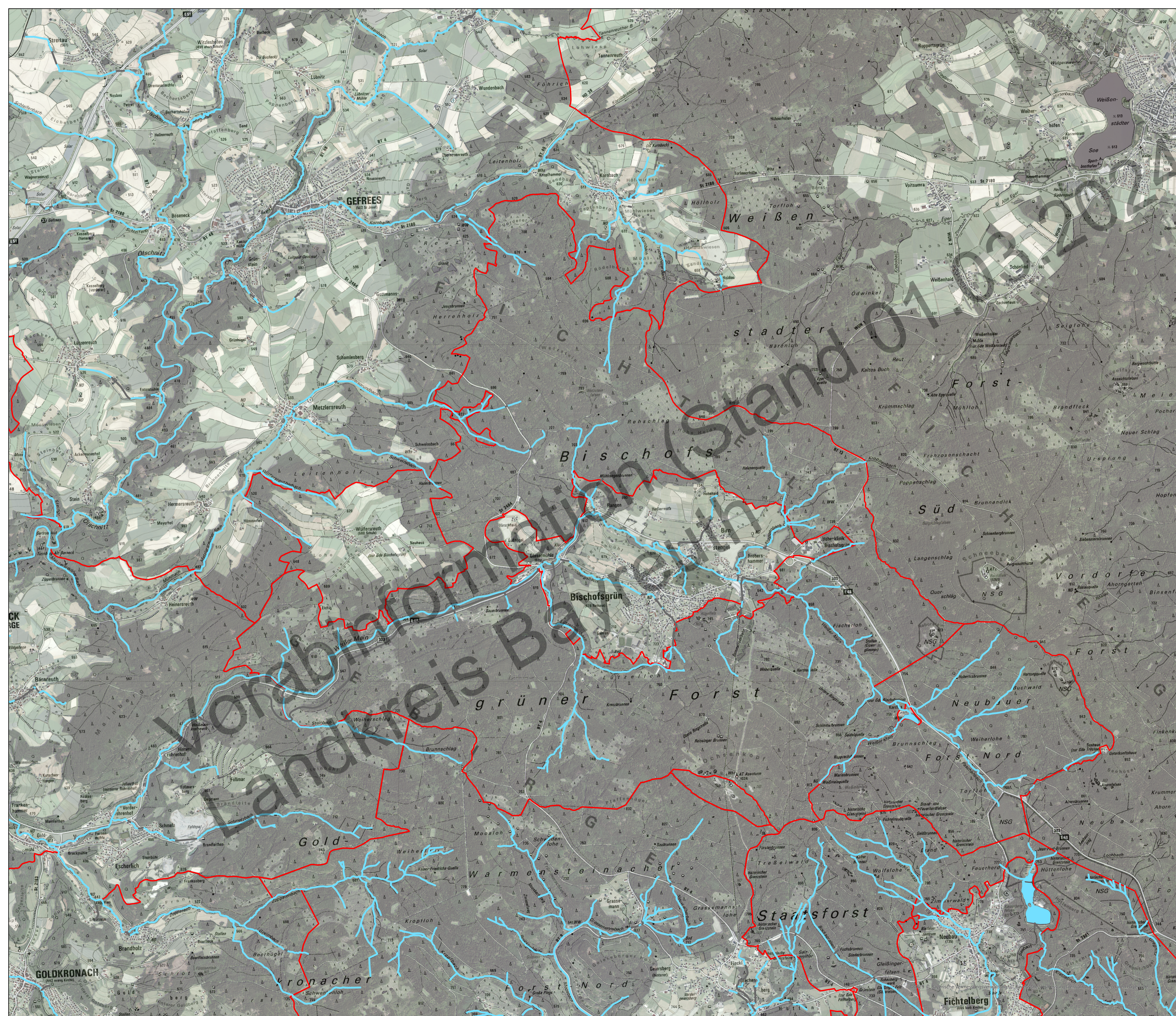





Vorläufige Einstufung der Gewässerrandstreifen-Kulisse der Gemeinde:
Bischofsgrüner Forst
(Stand: 01.03.2024)



Legende

-  Gewässerrandstreifen erforderlich
-  unterirdischer Verlauf
-  Gemeindegrenze



Maßstab: 1:21.000

