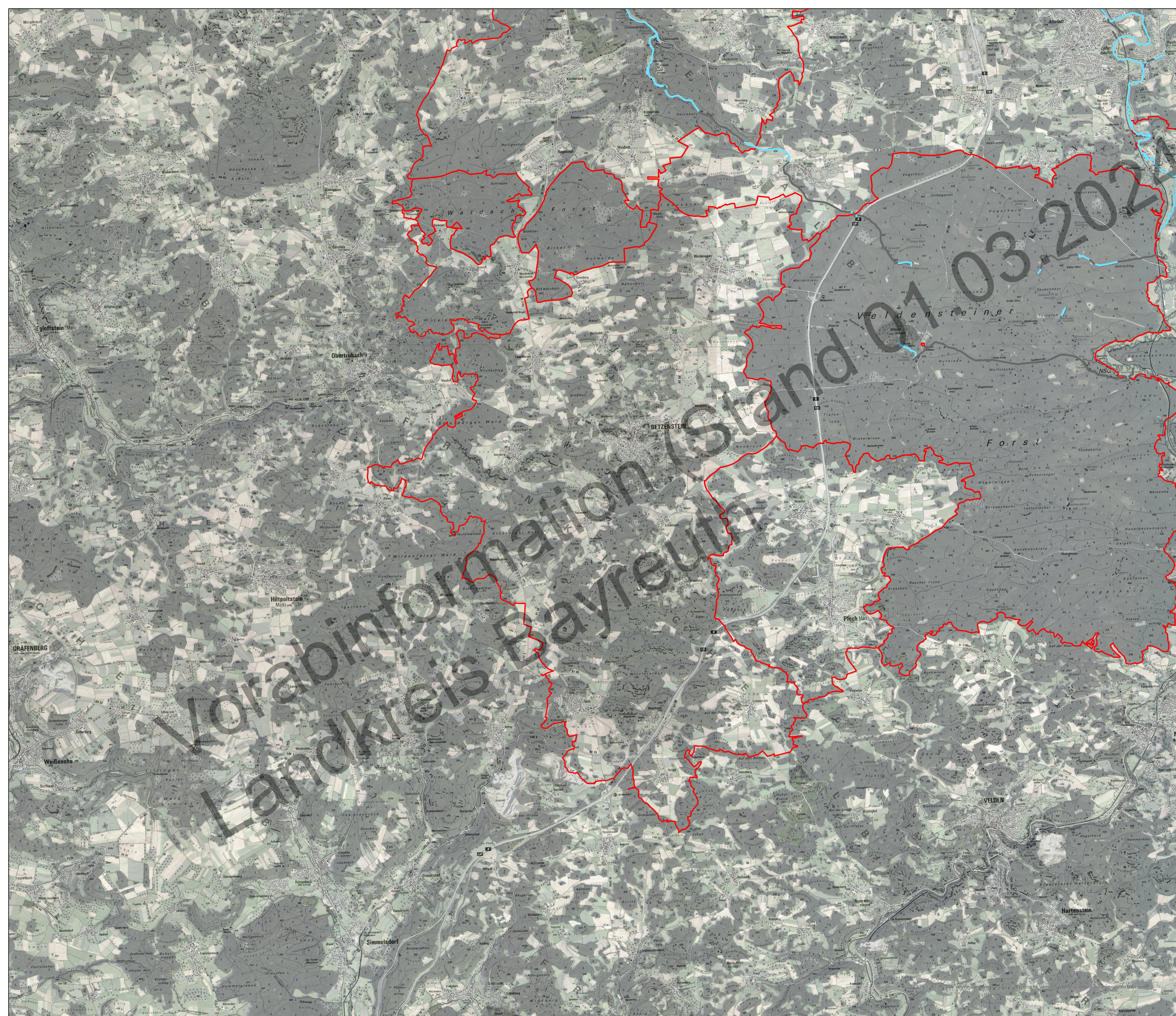



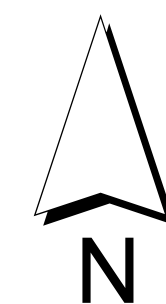


Vorläufige Einstufung der  
Gewässerrandstreifen-Kulisse der  
Gemeinde:  
Betzenstein  
(Stand: 01.03.2024)



Legende

-  Gewässerrandstreifen erforderlich
-  unterirdischer Verlauf
-  Gemeindegrenze



Maßstab: 1:33.000

