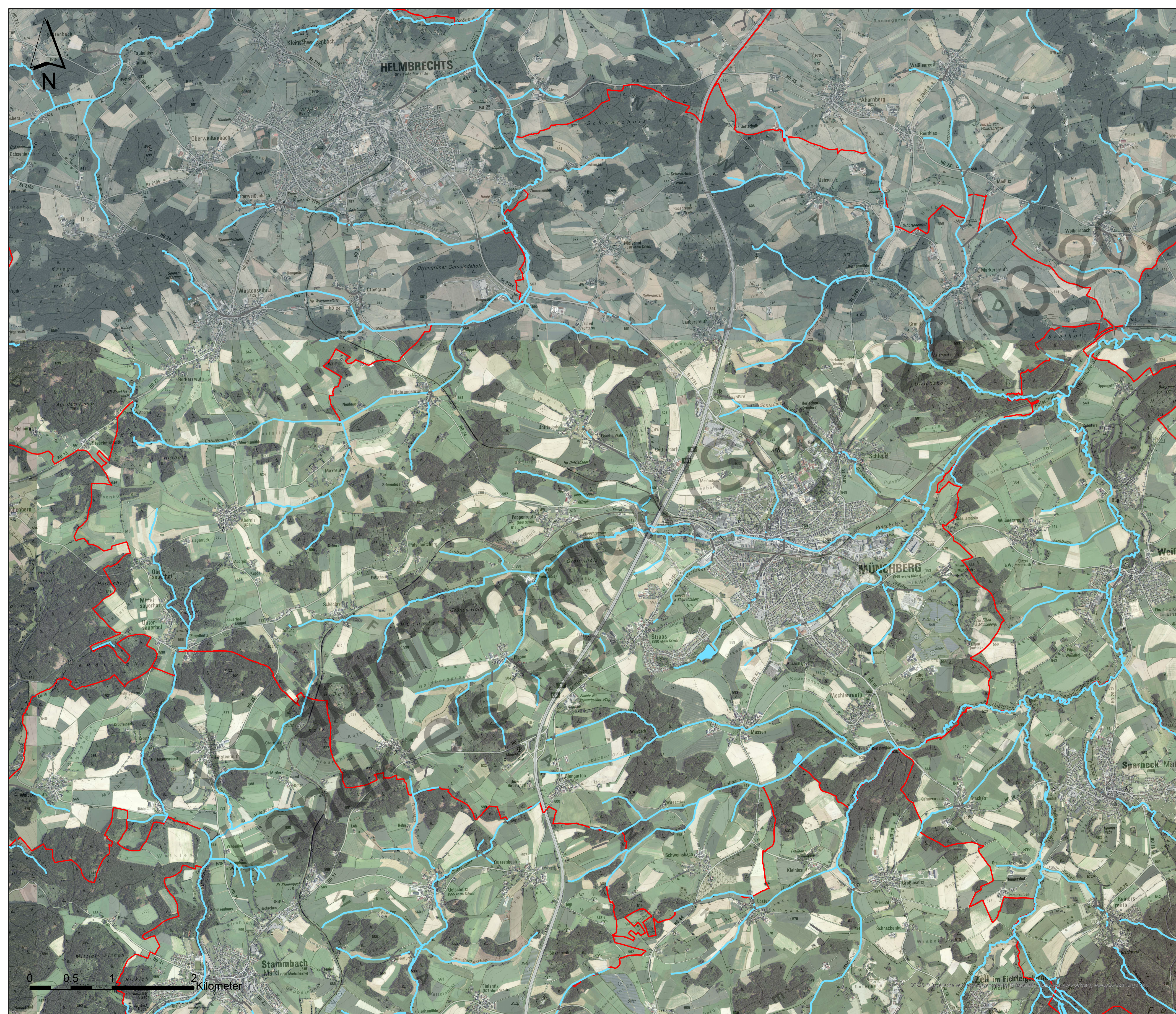





Vorläufige Einstufung der Gewässerrandstreifen-Kulisse der Gemeinde: Münchberg (Stand: 28.03.2022)



2)

**Legende**

-  Gewässerrandstreifen erforderlich
-  Unterirdischer Verlauf
-  Gemeindegrenze

0 0,5 1 2 Kilometer

